

CERTIFICATE OF LOCATION OF GOVERNMENT CORNER

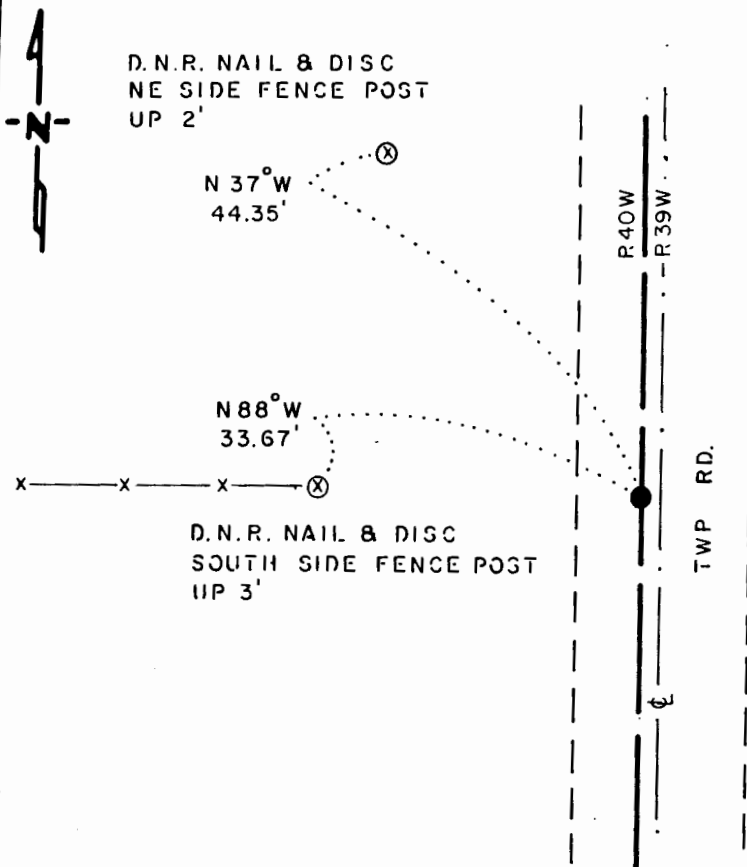
EAST QUARTER Corner of Section 13, Township 107 N., Range 40 W., 5th P.M.

STATE OF MINNESOTA, County of MURRAY

At the corner location shown on the sketch:

- On 8-14-85 found a SPIKE, DOWN 0.1'
DATE
- left monument as found, lowered monument, removed monument (explain)
- On 8-14-85 placed a 1 1/4" x 1 1/4" x 20" PERFORATED STEEL TUBE WITH
DATE
ALUMINUM CAP STAMPED "D.N.R. SURVEY MARKER", DOWN 0.3'

SKETCH OF REFERENCE TIES



NOTE:
MONUMENT IS
2.5' WEST OF C N-S ROAD

BEARINGS OBSERVED WITH COMPASS

Statement of evidence relative to this corner location is on back of page.

J. B. M. 9-10-85
G-950

I hereby certify that this document and the data contained herein was prepared by me or under my direct supervision.

Lowell R. Romer 10-9-85
SIGNATURE DATE

Registration No. 17005

- Land Surveyor, Professional Engineer
- County Surveyor, County Engineer

OFFICE OF THE COUNTY RECORDER

County of _____

I hereby certify that this document was filed in the Co. Recorders office at _____ M. on the _____ day of _____ A.D., 19__

County Recorder _____

By _____, Deputy

DOCUMENT NO. _____

East Quarter Corner Section 13, Township 107 North, Range 40 West

This corner was originally established by the U. S. General Land Office survey in 1861. The government notes show corner marked with a wood post set in mound of earth with pits and trench dug around the mound.

In March 1985, the DNR Bureau of Engineering contacted the Murray County Offices of the Recorder and Highway Engineer for corner information.

The following information was obtained from the Recorder's Office:

Surveyor's Record Book A, on Page 205, contains a survey made by J. W. Woolstencraft in October 1907. Survey shows that the government corner was found 2634 feet from the southeast corner of Section 13.

The following information was obtained from the DNR Bureau of Engineering's Office:

A 1964 survey shows corner but does not indicate what was found or set. Corner is shown 2632.44 feet from the southeast corner of Section 13, and at intersection of road and fence.

On July 2, 1985, the DNR Bureau of Engineering hired a backhoe operated by Larry Ruppert of Currie to dig for evidence of this corner. A 10 foot north-south by 10 foot east-west by 1.5 foot deep hole was dug, the center being the intersection of the center line of a north-south road and fence west. A spike was found down 0.1 of a foot and natural ground was encountered down 0.4 of a foot. No monument was found in excavated area. The spike was found to be 2632.52 feet from the southeast corner of Section 13.

Accept the spike as the location of the corner and replaced it with a DNR Survey Marker.

Traverse information is available from the DNR Bureau of Engineering.